

PERIODIC POINTS ON THE 2-SPHERE

CHARLES PUGH

Department of Mathematics, University of Chicago
5734 S. University Ave
Chicago, Illinois 60637, USA

and

Department of Mathematics, University of California
Berkeley, 970 Evans Hall #3840
Berkeley, CA 94720, USA

MICHAEL SHUB

CONICET, IMAS

Universidad de Buenos Aires
Buenos Aires, Argentina

and

Department of Mathematics, The CUNY Graduate School
365 Fifth Avenue, Room 4208
New York, NY 10016, USA

To Arieh Iserles on his 65th birthday

ABSTRACT. For a C^1 degree two latitude preserving endomorphism f of the 2-sphere, we show that for each n , f has at least 2^n periodic points of period n .

1. Introduction. The relationship between the long term dynamics of an endomorphism of a manifold and its long term effect on the algebraic topology of the manifold can depend on the smoothness of the endomorphism. See [4] for a discussion of this. Here we deal with a particular case of Problem 3 of that paper.

Let S be the 2-sphere, oriented in the standard fashion. Fix a continuous map $f : S \rightarrow S$ of global degree 2. That is, the map $f_* : H_2(S) \rightarrow H_2(S)$ is multiplication by 2. Problem 3 asks: Is the Growth Rate Inequality

$$\limsup_{n \rightarrow \infty} \frac{1}{n} \ln N_n(f) \geq \ln(2)$$

true? Here $N_n(f)$ is the number distinct periodic points of f having period n , i.e., the number of fixed points of f^n .

If f is merely continuous the answer is “not necessarily.” For as observed in [5], a Lipschitz counterexample is $z \mapsto 2z^2/|z|$ where S is the Riemann sphere. In polar coordinates f sends (r, θ) to $(2r, 2\theta)$. The only periodic points are the North and South poles.

2010 *Mathematics Subject Classification.* Primary: 37C25.

Key words and phrases. Periodic points, two sphere, degree two, smoothness, latitude preserving.

Michael Shub was supported by CONICET PIP 0801 2010-2012 and ANPCyT PICT 2010-00681.

On the other hand, if f is a rational map, then the answer is “yes.” See Proposition 1 of [6]. So the question becomes: Does there exist an $r \geq 1$ such that if f is C^r then the Growth Rate Inequality holds? Perhaps $r = 2$ will suffice, or even $r = 1$.

From [5] it follows that if f is C^1 then it must have infinitely many distinct periodic points, but their growth rate remains unknown. As shown in [3], the topological entropy of f is better understood: If f is C^1 then it is at least $\ln 2$. This implies there are invariant probability measures with measure theoretic entropy $\ln 2 - \epsilon$. Thus, if f is $C^{1+\alpha}$ then the sum of the Lyapunov exponents is at least $\ln 2 - \epsilon$.

We expect a version of Katok’s Theorem [2] about diffeomorphisms to be true for endomorphisms in the case that all the Lyapunov exponents are different from zero. In fact this is already proved in the case that all the Lyapunov exponents are positive. See [1]. The remaining case will be where one of the Lyapunov exponents is zero.

At the end of Section 4 we give three examples of smooth endomorphisms of the 2-sphere, two with topological entropy $\ln 2$, the other with topological entropy $\ln 3$. All have one Lyapunov exponent zero and are essentially 2 : 1. The first is of degree zero and has only one periodic point. The second and third have degree two, are unlike the map $z \mapsto z^2$, but satisfy the Growth Rate Inequality. All three examples preserve the latitude foliation.

We hope this elementary result might give a clue as to how homology assumptions can intervene when there are zero Lyapunov exponents and also families of invariant center manifolds replacing the circles of our foliation, but that will surely go way beyond what we can accomplish here.

2. Invariant latitudes. We say that $f : S \rightarrow S$ preserves the latitude foliation if it carries each latitude into another latitude or to one of the poles. It need not be a homeomorphism from one latitude to another. We assume throughout that $f : S \rightarrow S$ is a continuous, latitude preserving endomorphism of degree 2.

Theorem 1. *If f is C^1 then for each n , f^n has at least 2^n fixed points.*

Corollary 2. *If f is C^1 and N_n is the number of fixed points of f^n then the Growth Rate Inequality*

$$\limsup_{n \rightarrow \infty} \frac{1}{n} \ln(N_n) \geq \ln(2).$$

holds.

Proof. This is immediate from the theorem, but see the remark at the end of Section 3 for a shorter proof of the corollary. \square

Remark. f^n is the n^{th} iterate of f and the fixed points are geometrically distinct. The C^1 assumption is used rarely in the proof, but without it the theorem fails: As noted above, the Lipschitz endomorphism $z \mapsto 2z^2/|z|$ from [5] has degree 2 but only two periodic points.

Lemma 3. *A latitude preserving endomorphism sends a pole to a pole, not a latitude.*

Proof. Obvious from continuity of the endomorphism. \square

Parametrize the latitudes by their height h , $0 \leq h \leq 1$. (The sphere S rests on the xy -plane and has center $(0, 0, 1/2)$.) The Southpole corresponds to $h = 0$ and the Northpole to $h = 1$. If $L(h)$ denotes the latitude of height h then we define the **latitude map** $\varphi : [0, 1] \rightarrow [0, 1]$ by

$$\varphi(h) = \text{height of } f(L(h)).$$

It is continuous and Lemma 3 implies that $\varphi\{0, 1\} \subset \{0, 1\}$. The map f fibers over φ .

Orient each latitude circle in S in a counterclockwise fashion as viewed from above the Northpole of S . If $0 < h, \varphi(h) < 1$ then the **latitude degree** $d(h)$ is the degree of the map $f : L(h) \rightarrow L(\varphi(h))$. Since these latitude circles are oriented, $d(h)$ is well defined and locally constant as a function of $h \in ((0, 1) \cap \varphi^{-1}(0, 1))$.

Corresponding to the maximal open intervals I on which $d(h)$ is well defined and constant are open bands $B = B(I) \subset S$,

$$B = \bigcup_{h \in I} L(h).$$

We denote by $d(B)$ the common latitude degree of f on latitudes in B . Lemma 3 implies that the value of φ at the endpoints of I is 0 or 1.

Proposition 4. *The global degree of f is*

$$d(f) = \sum \Delta_I \varphi \cdot d(B)$$

where $\Delta_I \varphi = \varphi(b) - \varphi(a)$ and the sum is taken over the bands and their band intervals $I = (a, b)$.

Proof. By continuity of φ there are at most finitely many band intervals $I = (a, b)$ with $\varphi(a) \neq \varphi(b)$, so the sum makes sense. The degree of f is independent of homotopy, so we can deform f on each band B in order that φ becomes linear on the band interval I . Then we can homotop f further to make the intervals on which φ is constant become points. Finally we can homotop f on each latitude so that up to homothety, it sends z to z^d or \bar{z}^d . (In the case $d = 0$ we homotop f so that on each latitude, up to homothety it is the constant map $z \mapsto i$.) The net effect is that by homotopy, we can assume the latitude map of f is a sawtooth as shown in Figure 1, and the map on each latitude is the simplest possible.

Take a regular value $v \in S$ of f near $(1/2, 0, 1/2)$. The global degree of f is the number of pre-images of v , counted with multiplicity. There are no pre-images in bands with latitude degree zero, because those bands are sent to the half-longitude through $(0, 1/2, 1/2)$. In a band B with $\Delta_I \varphi = 1$ and latitude degree $d > 0$ there are d pre-images. The same is true if $\Delta_I \varphi = -1$ and B has latitude degree $-d < 0$. The other bands give pre-images with corresponding negative multiplicity, so the total number of pre-images, counted with multiplicity, is the sum $\sum \Delta_I \varphi \cdot d(B)$ as claimed. \square

If $\Delta_I \varphi = 1$ we say that the corresponding band is **directed upward** or **ascends**, while if $\Delta_I \varphi = -1$ it is **directed downward** or **descends**. If $\Delta_I \varphi = 0$, the band is **neutral**.

Lemma 5. *There exist directed bands.*

Proof. Since f is surjective, so is φ , and φ carries some minimal interval $[a, b] \subset [0, 1]$ onto $[0, 1]$ with $\varphi(a) = 0$ and $\varphi(b) = 1$ or vice versa. The interval (a, b) corresponds to a directed band. \square

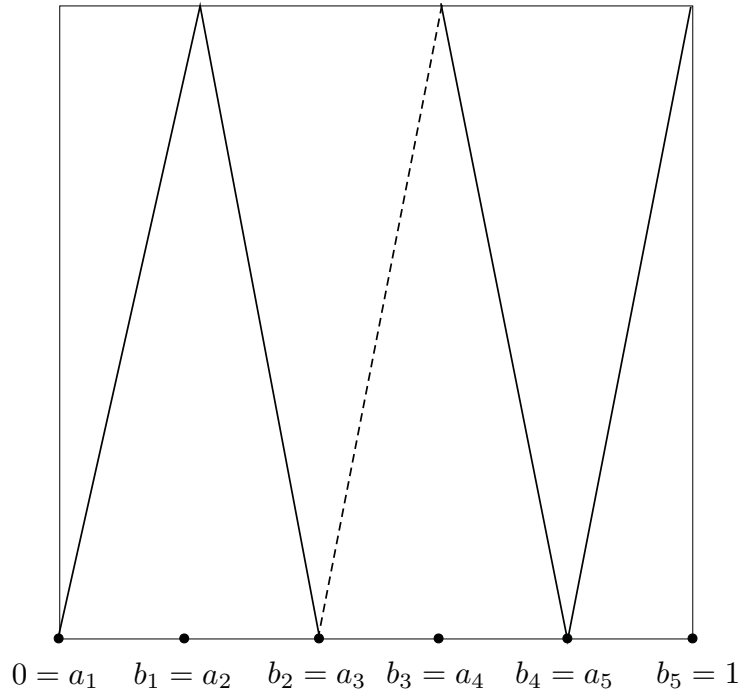


Figure 1. The graph of a latitude map with five bands. Each pole is fixed by f . We imagine f sending the first, second, fourth, and fifth band to S with latitude degree d_1, d_2, d_4, d_5 , and sending the third band to S with latitude degree zero.

Lemma 6. *If the band B is directed and $|d(B)| \geq 2$ then B contains an f -invariant latitude.*

Proof. **Case 1.** ∂B is the pair of poles, each being fixed by f . Since f has latitude degree 2 or better and is C^1 at the poles, its derivative there is zero. For let p be a pole. The derivative of f at p is a linear map of the tangent space $T_p S$ to itself. Infinitesimally it preserves the latitude foliation, so it is a scalar multiple of a rotation or reflection, $T_p f = cR$. But if $c \neq 0$ then f has latitude degree ± 1 on B , contrary to the hypothesis that $|d(B)| \geq 2$. Thus, $c = 0$ and the poles are sinks for f , so the latitude map $\varphi : [0, 1] \rightarrow [0, 1]$ has

$$\begin{aligned}\varphi(0) &= 0 & \varphi'(0) &= 0 \\ \varphi(1) &= 1 & \varphi'(1) &= 0.\end{aligned}$$

This gives a fixed point h of φ with $0 < h < 1$, and $L(h)$ is invariant under f . See Figure 2.

Case 2. ∂B is the pair of poles, and f interchanges them. Differentiability of f is irrelevant. See Figure 2.

Case 3. ∂B is a pole, fixed by f , and a latitude. The pole is a sink and the latitude is sent the other pole. This gives a fixed point of φ as in Case 1.

Case 4. ∂B is a pole and a latitude, and f sends the pole to the opposite pole. This gives a fixed point as in Case 2.

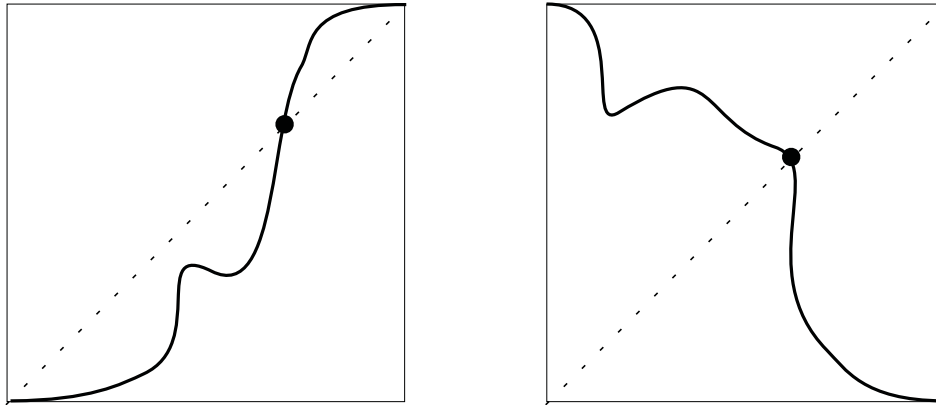


Figure 2. The graph of φ . The first corresponds to Case 1 and the second to Case 2.

Case 5. ∂B is two latitudes, say L_1, L_2 with heights $0 < h_1 < h_2 < 1$. Then $\varphi : [h_1, h_2] \rightarrow [0, 1]$ sends $[h_1, h_2]$ over itself, so it has a fixed point $h \in (h_1, h_2)$. The latitude $L(h)$ is invariant by f . \square

Remark. The hypothesis that f is C^1 is used only in Cases 1 and 3.

Proposition 7. *If the band B is directed and $|d(B)| \geq 2$ then for each n , f^n has at least 2^n fixed points.*

Proof. By Lemma 6 there is an invariant latitude on which f has degree k with $|k| \geq 2$. The n^{th} iterate of such a map of the circle has at least $|k|^n$ fixed points. \square

3. Counting fixed points.

Lemma 8. *If f and g preserve the latitude foliation then the latitude degree of $f \circ g$ is the product of their latitude degrees.*

Proof. The degree of the composite is the product of the degrees of its factors. \square

Lemma 9. *Let $f : S \rightarrow S$ be a continuous latitude preserving surjection, not necessarily of degree 2. If each of its directed bands B has $|d(B)| \leq 1$ then f has more than $d(f)$ fixed points.*

Proof. We count the directed bands as follows.

- (a) a is the number of ascending bands with $d(B) = 1$.
- (b) b is the number of ascending bands with $d(B) = -1$.
- (c) c is the number of descending bands with $d(B) = 1$.
- (d) d is the number of descending bands with $d(B) = -1$.
- (e) e is the number of directed bands with $d(B) = 0$.

We think of the graph of φ as composed of “legs” that join $[0, 1] \times 0$ to $[0, 1] \times 1$. Formally, they are arcs in the open square $(0, 1) \times (0, 1)$, and they correspond to the bands B_1, \dots, B_N . See Figures 3, 4, and 5. Ascending legs correspond to ascending bands, descending to descending. We call a leg corresponding to a band with $d(B) = -1$ a **reverse-leg**, and we call a leg corresponding to a band with $d(B) = 0$ a **zero-leg**. There are $b + d$ reverse-legs and e zero-legs. Each intersection of the diagonal Δ with a reverse leg produces two fixed points of f , since such an

intersection gives an f -invariant latitude L , and $f : L \rightarrow L$ reverses orientation. Each intersection of Δ with a zero-leg produces at least one fixed point of f , since such an intersection gives an f -invariant latitude L , and $f : L \rightarrow L$ has degree zero. Intersections of Δ with other legs need not produce fixed points.

The rest of the proof is a counting argument in which there are three cases to consider, concerning how f affects the poles, and twelve subcases concerning which legs Δ crosses.

Let p be the number of fixed poles, and $P = N_1(f)$ the number of fixed points of f (including the fixed poles). According to Proposition 4 the degree of f is $d(f) = (a + d) - (b + c)$. We are trying to show that $P > d(f)$. Naively, we imagine Δ crossing all the legs, and hence generating corresponding fixed points – two for each (b)-crossing, two for each (d)-crossing, and one for each (e)-crossing. Thus we would hope

$$P \geq p + e + 2(b + d) > (a + d) - (b + c),$$

which leads us to ask whether $p + N > 2a - 2b$ since $a + b + c + d + e = N$. This inequality is in fact true, but we need a stronger one because if Δ fails to cross some legs of type (b), (d), or (e) then we would have over-estimated the fixed points. We write

$$\begin{aligned} P - d(f) &\geq p + e + 2(b + d) - (a + d) + (b + c) - r \\ &= p + N - 2a + 2b - r \end{aligned}$$

where r is the correction term due to Δ missing legs of type (b), (d), (e). Thus,

$$r = \begin{cases} 0 & \text{if } \Delta \text{ crosses all legs,} \\ 1 & \text{if } \Delta \text{ crosses all legs except one of type (e),} \\ 2 & \text{if } \Delta \text{ crosses all legs except two of type (e),} \\ 2 & \text{if } \Delta \text{ crosses all legs except one of type (b) or (d),} \\ 3 & \text{if } \Delta \text{ crosses all legs except one of type (b) or (d)} \\ & \text{and one of type (e),} \\ 4 & \text{if } \Delta \text{ crosses all legs except two of type (b) or (d).} \end{cases}$$

Case 1. φ switches the poles. Then $p = 0$, $\varphi(0) = 1$, $\varphi(1) = 0$, N is odd, and there are $(N - 1)/2$ ascending legs. In particular a is at most the number of ascending legs, so $2a \leq N - 1$. The diagonal meets all the legs so we have $r = 0$. This gives

$$\begin{aligned} P - d(f) &\geq p + N - 2a + 2b - r \\ &\geq 0 + N - (N - 1) + 2b - 0 \geq 1 \end{aligned}$$

since $2b \geq 0$. Thus $P > d(f)$ in Case 1. See Figure 3.

Case 2. f sends both poles to the same pole, say the Southpole. Then $p = 1$, $\varphi(0) = 0 = \varphi(1)$, N is even, and there are $N/2$ ascending legs. In particular, $2a \leq N$. The diagonal crosses all the legs except possibly the first. See Figure 4

Case 2a. The first leg is of type (a). Then Δ crosses all the legs of type (b), (d), (e), which implies $r = 0$. This gives

$$\begin{aligned} P - d(f) &\geq p + N - 2a + 2b - r \\ &\geq 1 + N - N + 2b - 0 \geq 1 \end{aligned}$$

since $2b \geq 0$.

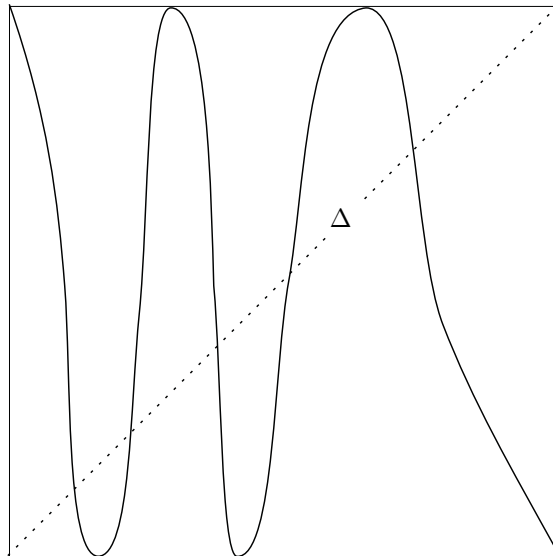


Figure 3. The graph of a latitude map φ when f interchanges the poles. The diagonal Δ meets each leg. The graph is simplified – each leg can actually intersect Δ several times; in the case shown, the graph must intersect Δ five times. Also unshown are possible arcs in the graph that join the top or bottom of the square to itself. They correspond to neutral bands

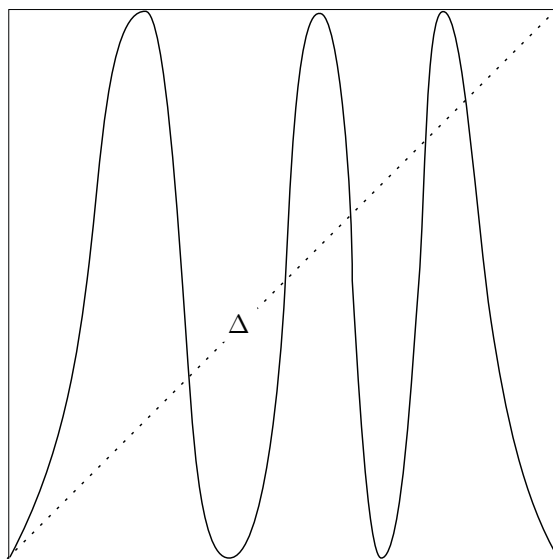


Figure 4. The graph of a latitude map when f sends both poles to the Southpole. It is also simplified. The diagonal meets each leg except perhaps the first.

Case 2e. The first leg is of type (e). Then $r = 1$. Also, $2a \leq N - 2$ since there are $N/2$ ascending legs, one of which (the first one) is of type (e), not of type (a). This gives

$$\begin{aligned} P - d(f) &\geq p + N - 2a + 2b - r \\ &\geq 1 + N - (N - 2) + 2b - 1 \geq 2 \end{aligned}$$

since $2b \geq 0$.

Case 2b. The first leg is of type (b). Then $r = 2$, and as in the previous case, $2a \leq N - 2$. This gives

$$\begin{aligned} P - d(f) &\geq p + N - 2a + 2b - r \\ &\geq 1 + N - (N - 2) + 2b - 2 \geq 3 \end{aligned}$$

since $2b \geq 2$. Thus $P > d(f)$ in Case 2.

Case 3. f fixes both poles. Then $p = 2$, $\varphi(0) = 0$, $\varphi(1) = 1$, N is odd, and there are $(N + 1)/2$ ascending legs. In particular, $2a \leq N + 1$. The diagonal crosses all legs except possibly the first and last. See Figure 5.

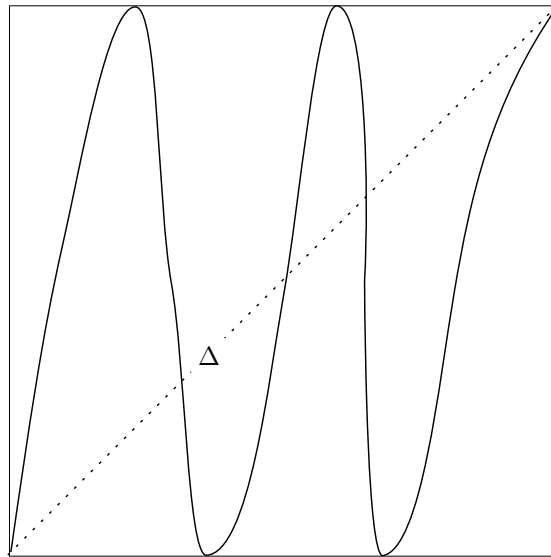


Figure 5. The graph of a latitude map when f leaves the poles fixed. It is also simplified. The diagonal meets each leg except perhaps the first and last.

Case 3aa. The first and last legs are of type (a). Then Δ crosses all the legs of type (b), (d), (e), so $r = 0$. This gives

$$\begin{aligned} P - d(f) &\geq p + N - 2a + 2b - r \\ &\geq 2 + N - (N + 1) + 2b - 0 \geq 1 \end{aligned}$$

since $2b \geq 0$.

Case 3ae. The first leg is of type (a) and the last of type (e). Then $r = 1$. Also, since the first and last legs ascend, and since one of them (the last one) is of type

(e), not of type (a), we have $2a \leq N - 1$. This gives

$$\begin{aligned} P - d(f) &\geq p + N - 2a + 2b - r \\ &\geq 2 + N - (N - 1) + 2b - 1 \geq 2 \end{aligned}$$

since $2b \geq 0$.

Case 3ab. The first leg is of type (a) and the last of type (b). Then $r = 2$ and, as in the previous case, $2a \leq N - 1$. This gives

$$\begin{aligned} P - d(f) &\geq p + N - 2a + 2b - r \\ &\geq 2 + N - (N - 1) + 2b - 2 \geq 3 \end{aligned}$$

since $2b \geq 2$.

Case 3ea. The first leg is of type (e) and the last of type (a). This is symmetric to Case 3ae.

Case 3ee. The first and last legs are of type (e). If $N \geq 3$ then $r = 2$ and $2a \leq N - 3$ since two ascending legs are not of type (a). This gives

$$\begin{aligned} P - d(f) &\geq p + N - 2a + 2b - r \\ &\geq 2 + N - (N - 3) + 2b - 2 \geq 3 \end{aligned}$$

since $2b \geq 0$. On the other hand, if $N = 1$ then there is just one ascending leg, and it is of type (e). Then $r = 1$ and $a = 0 = b$. This gives

$$\begin{aligned} P - d(f) &\geq p + N - 2a + 2b - r \\ &= 2 + 1 - 0 + 0 - 1 = 2. \end{aligned}$$

Case 3eb. The first leg is of type (e) and the last of type (b). Then $N \geq 3$, $r = 3$, and $2a \leq N - 3$. This gives

$$\begin{aligned} P - d(f) &\geq p + N - 2a + 2b - r \\ &\geq 2 + N - (N - 3) + 2b - 3 \geq 4 \end{aligned}$$

since $2b \geq 2$.

Case 3ba. The first leg is of type (b) and the last of type (a). This is symmetric to Case 3ab.

Case 3be. The first leg is of type (b) and the last of type (e). This is symmetric to Case 3eb.

Case 3bb. The first and last legs are of type (b). If $N \geq 3$ then $r = 4$ and $2a \leq N - 3$. This gives

$$\begin{aligned} P - d(f) &\geq p + N - 2a + 2b - r \\ &\geq 2 + N - (N - 3) + 2b - 4 \geq 5 \end{aligned}$$

since $2b \geq 4$. On the other hand, if $N = 1$ then there is just one ascending leg and it is of type (b). Then $r = 2$, $a = 0$, and $b = 1$. This gives

$$\begin{aligned} P - d(f) &\geq p + N - 2a + 2b - r \\ &= 2 + 1 - 0 + 2 - 2 = 3. \end{aligned}$$

Thus $P > d(f)$ in Case 3, which completes the proof of Lemma 9. □

Remark. The degree of f can be negative, in which case Lemma 9 says nothing. One can re-work the preceding estimates to show that

$$P - |d(f)| \geq -1,$$

but we do not need this.

Proof of Theorem 1. We assume that the C^1 latitude preserving map $f : S \rightarrow S$ has degree 2 and claim that for each n , f^n has at least 2^n fixed points. By Lemma 5 there exist directed bands. If there is a directed band B with $|d(B)| \geq 2$ then the result follows from Proposition 7. If all the directed bands have $|d(B)| \leq 1$ then by Lemma 8 the same is true of f^n . Applying Lemma 9 to f^n , we conclude that f^n has more than $d(f^n) = 2^n$ fixed points. \square

Remark. The proof of Corollary 2 does not require the full force of Lemma 9. It suffices that $P = N_1(f) \geq d(f) - k$ where k is an absolute constant. For, as just observed, if all the bands for f have $|d(B)| \leq 1$ then the same is true for f^n . Thus, $N_1(f^n) \geq d(f^n) - k$. Since $N_1(f^n) = N_n(f)$, we get

$$N_n \geq 2^n - k$$

from which Corollary 2 is immediate.

Here is the caseless proof of this weaker inequality. Since all the bands of f have $|d(B)| \leq 1$, the number of fixed points of f is at least $e - 2 + 2(b + d - 2)$. For the graph of the latitude map has at least $e - 2$ legs of type (e) that cross the diagonal, and at least $b + d - 2$ legs of type (b) or (d) that cross the diagonal. The former produce one fixed point each, and the latter two fixed points each. For it is only the first and last legs of the latitude map that can fail to intersect the diagonal. This quantity minus the degree of f is $N - 2a + 2b - 7$ where N is the number of legs. That is,

$$N_1(f) - d(f) \geq N - 2a + 2b - 7 \geq -7$$

since $2a \leq N + 1$ and $2b \geq 0$.

4. Three examples. It is possible to code a latitude preserving map f as follows. Take any finite sequence of integers $(n_0; d_1, \dots, d_N)$ such that n_0 is 0 or 1, and make the following interpretation. If $n_0 = 0$ and N is even then consider directed bands B_1, \dots, B_N such that

- B_1 ascends and has latitude degree d_1
- B_2 descends and has latitude degree d_2
- B_3 ascends and has latitude degree d_3
-
- B_N descends and has latitude degree d_N .

On the other hand, if N is odd then the last band ascends and has latitude degree d_N . Similarly, if $n_0 = 1$ then every ascending band becomes descending and vice versa. The latitude degrees remain the same. The choice $n_0 = 0$ indicates that f fixes the Southpole, while $n_0 = 1$ indicates that f sends the Southpole to the Northpole.

Since ascending and descending bands alternate, such a code is well defined for any latitude preserving map $f : S \rightarrow S$, and it describes f well up to non-monotonicity of the latitude maps $\varphi : I \rightarrow (0, 1)$, the presence of neutral bands, and latitude rotation.

The global degree of f is the alternating sum $d_1 - d_2 + \dots + (-1)^{N+1}d_N$.

Assume that $|d_i| \leq 1$ for $1 \leq i \leq N$. It is easy to see that to each code $(n_0; d_1, \dots, d_N)$ there corresponds a smooth endomorphism f with the following properties.

- The map f preserves the latitude foliation, and up to homothety it is $z \mapsto z$ or $z \mapsto \bar{z}$ on each latitude.
- S has N bands B_i with latitude degrees d_i .
- If $d_i \neq 0$ then f sends B_i diffeomorphically to the sphere minus the poles.
- If $d_i = 0$ then f sends B_i to the prime meridian M . (M is the longitude arc that joins the poles and contains the point $(1/2, 0, 1/2)$.)

We refer to such an f as a good representative of the code. It is not unique. Here are three examples.

1. The code is $(0; 1, 1)$. Let f be a good representative of the code. Then S has two bands, the Southern and Northern hemispheres, minus the poles and equator.
 - f wraps the Southern hemisphere upward over S , pinching the equator to the Northpole, and preserving the latitude orientation. It fixes the Southpole.
 - f wraps the Northern hemisphere downward over S , pinching the equator to the Northpole, and preserving the latitude orientation. It sends the Northpole to the Southpole.

The map f has degree zero, preserves the latitude foliation, and fixes the Southpole. Its latitude map φ is unimodal, so its entropy is $\ln 2$, and since f fibers over φ with diffeomorphisms in the circle fibers, it too has entropy $\ln 2$. Now take a latitude-preserving rotation R of the sphere by an angle θ where $\theta/2\pi$ is irrational. Set $F = f \circ R$. The entropy is unaffected and F preserves the latitude foliation. The only fixed point of F^n is the Southpole, for the effect of F^n on any invariant latitude is an irrational rotation. Thus, the Growth Rate Inequality holds for F , in the form $0 \geq 0$.

2. The code is $(0; 1, -1)$. Let g be a good representative of the code. Again, S has the hemisphere bands.
 - g wraps the Southern hemisphere upward over S , pinching the equator to the Northpole, and preserving the latitude orientation. It fixes the Southpole.
 - g wraps the Northern hemisphere downward over S , pinching the equator to the Northpole, and reversing the latitude orientation. It sends the Northpole to the Southpole.

The map g has degree 2 and fixes the Southpole. Again, let R be an irrational rotation of the sphere and set $G = g \circ R$. The map G preserves the latitude foliation. Its latitude map φ is unimodal, so its entropy is $\ln 2$, and since f fibers over φ with diffeomorphisms in the circle fibers, it too has entropy $\ln 2$. The map φ^n has 2^n fixed points. Each corresponds to a G^n -invariant latitude L . On half of them, G^n preserves the latitude orientation, and on half of them G^n reverses it. On the latitudes with preserved orientation, G^n is an irrational rotation and has no periodic points. On the latitudes with reversed orientation G^n has two fixed points. Altogether, G^n has 2^n fixed points, so the Growth Rate Inequality holds for G , in the form $\ln 2 \geq \ln 2$.

3. The code is $(0; 1, 0, 1)$. Let h be a good representative of the code. Then S has three bands B_1, B_2, B_3 .
 - h wraps B_1 upward over S , pinching its boundary latitude to the Northpole, and preserving the latitude orientation. It fixes the Southpole.

- h wraps B_2 downward along the prime meridian M , pinching its lower boundary latitude to the Northpole and its upper boundary latitude to the Southpole. The h -image of B_2 equals M .
- h wraps B_3 upward over S , pinching its boundary latitude to the Southpole, and preserving the latitude orientation. It fixes the Northpole.

The map h has degree 2 and fixes both poles. Its latitude map φ is bimodal, so its entropy is $\ln 3$, and since h fibers over φ with diffeomorphisms in the circle fibers, it too has entropy $\ln 3$. Take again an irrational rotation of the sphere, R , and set $H = h \circ R$. The map φ^n has 3^n fixed points. For the majority of them, their φ -orbits contain points in I_2 . (That is, the proportion of the φ^n -fixed-points whose orbit includes points of I_2 tends to 1 as $n \rightarrow \infty$. The other orbits lie in a zero measure Cantor set.) For each such fixed point of φ^n we have an H^n -invariant latitude L , at least one of whose H -iterates lies in B_2 , and therefore $H^n(L)$ is the single point $L \cap M$. The other fixed points of φ^n correspond to H^n -invariant latitudes whose H -orbits avoid B_2 . On these latitudes, H^n is an irrational rotation, so they give no fixed points. Altogether, H^n has 3^n fixed points, nearly each of which contributes one fixed point of H^n , so the Growth Rate Inequality holds in the form $\ln 3 \geq \ln 2$.

Remark. It is possible that Lemma 9 and our theorem have proofs using a coding like this. We would need to know how the coding is affected when we take a banding B_1, \dots, B_N of S and consider a sub-banding of each B_i as

$$B_{ij} = B_i \cap f^{-1}(B_j).$$

REFERENCES

- [1] Katrin Gelfert and Christian Wolf, *On the distribution of periodic orbits*, Discrete and Continuous Dynamical Systems, **36** (2010), 949–966.
- [2] Anatole Katok, *Lyapunov Exponents, Entropy, and Periodic Points for Diffeomorphisms*, Institute des Hautes Études Scientifiques, Publications Mathématiques, **51** (1980), 137–173.
- [3] Michal Misiurewicz and Feliks Przytycki, *Topological entropy and degree of smooth mappings*, Bull. Acad. Pol., **25** (1977), 573–574
- [4] Michael Shub, *All, most, dome differentiable dynamical systems*, Proceedings of the International Congress of Mathematicians, Madrid, Spain, (2006), European Math. Society, 99–120.
- [5] Michael Shub and Dennis Sullivan, *A remark on the lefschetz fixed point formula for differentiable maps*, Topology, **13** (1974), 189–191.
- [6] Michael Shub, *Alexander cocycles and dynamics*, Asterisque, Société Math. de France, (1978), 395–413.

Received October 2012; revised March 2013.

E-mail address: pugh@math.uchicago.edu

E-mail address: pugh@math.berkeley.edu

E-mail address: shub.michael@gmail.com